

HILL TREE FARM

Directions:

- * There are two parking lots for Hill Tree Farm, one on Schulman Veselak Road and one on Ballahack Road #2.
- * Heading east on Mt. Parnassus Road, turn left (north) onto Schulman Veselak Road. At the stop sign, either:
- * Continue straight on Schulman Veselak Road for .2 miles and the blue trail parking lot will be on your left, or
- * Turn left onto Ballahack Road #2, and in .2 miles the parking lot will be on your right.

For more information or to report any problems during your visit, see:
www.ehlt.org

Trail Facts:

- The preserve features trails criss-crossing through several fields and a variety of forest types. Many of the trails are wide and flat, making for leisurely rambles by visitors of all ages and abilities. Benches on some trails also offer opportunities for rest and birdwatching.
- The parking lot on Ballahack Road #2 offers limited parking but easy access to flat or gently sloping trails.
- The parking lot on Schulman Veselak Road provides access to Hill Tree Farm via the blue trail, which winds through wetlands and features bridges and a hill that some hikers may find challenging.
- **NOTE: Some of the trail system lies on the private property of the landowners who donated Hill Tree Farm to East Haddam Land Trust. On this map, those trails are marked with dotted lines. Please respect the landowners' privacy and show your appreciation for their generosity by staying on blazed trails.**



EAST HADDAM
YOUTH AND FAMILY
SERVICES

EAST HADDAM TRAILS

HILL TREE FARM

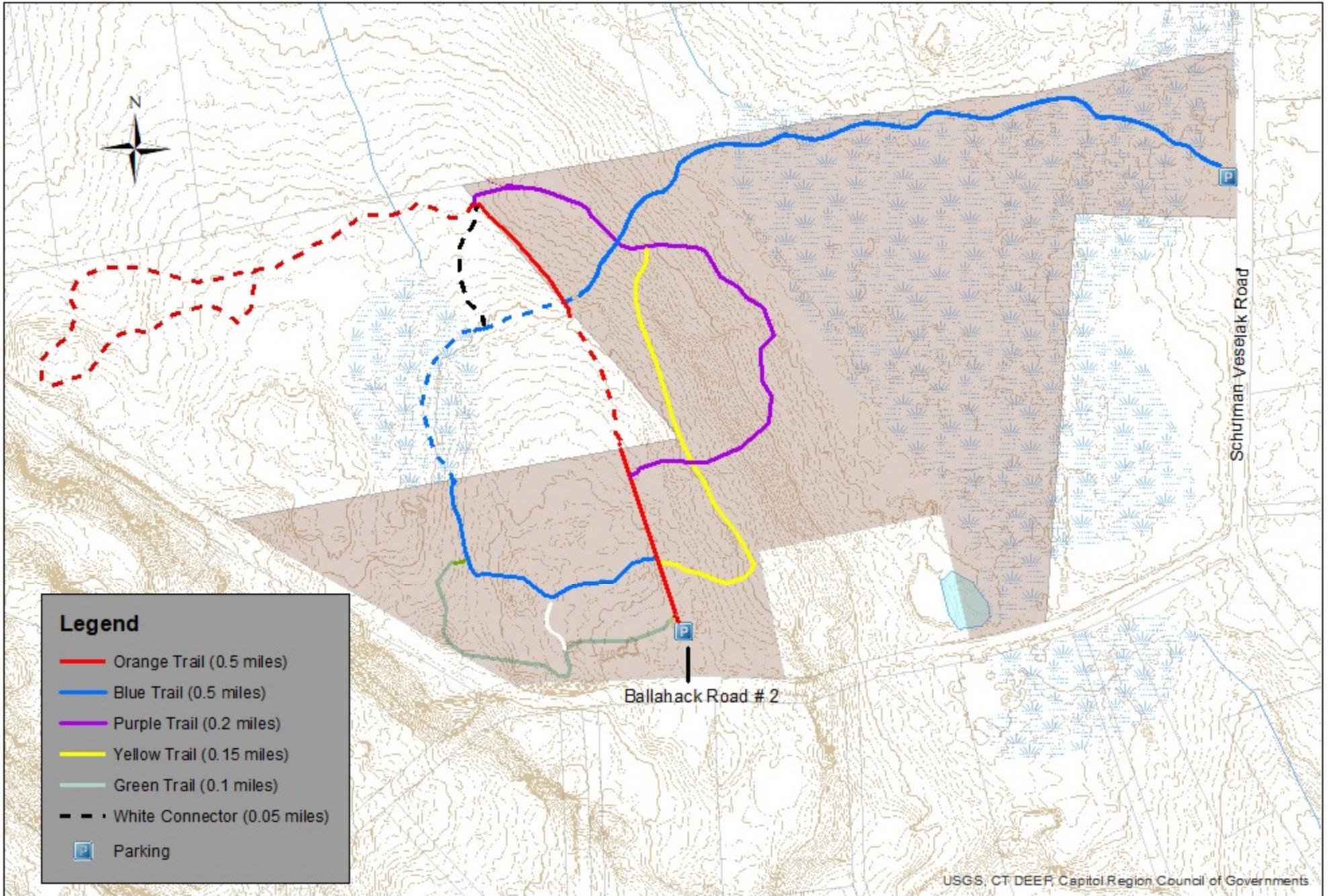
The 25.5-acre Hill Tree Farm was donated to East Haddam Land Trust in 2024 by Sarah Gworek. Sarah and her fiancé Graham MacDonald continue to steward the property. They have also generously allowed access to trails that lie in whole or in part on their own private property.

Please respect their privacy and show your appreciation for their generosity by staying on blazed trails.

Hill Tree Farm was purchased in the late 1950s by Sarah Gworek's father, Lester Hill, who established a Christmas tree farm on the site. Since then the property has been actively managed under the guidance and with the assistance of foresters from the State of Connecticut and representatives of the Audubon Society.



HILL TREE FARM



For general reference only

Managed by EAST HADDAM LAND TRUST

