

## MILLER FARM PRESERVE

### Directions:

- \* From Rte, 82m turn east onto Clark Hill Road in Hadlyme (opposite Hadlyme Congregational Church).
- \* Clark Hill Road turns into Tater Hill Road.
- \* At approximately 3.1 miles, turn left onto A.P. Gates Road.
- \* There is a Miller Farm parking area about .2 miles on the right from Tater Hill. An additional small parking area will be constructed about .1 miles past A.P. Gates Road on the left on Tater Hill.

**IMPORTANT:** Until the Parking area on A.P. Gates Road is available, park on the grass, adjacent to Tater Hill Cemetery at the corner of Tater Hill and A.P. Gates.

For more information or to report any problems during your visit, see:

[www.ehlt.org](http://www.ehlt.org)



EAST HADDAM  
YOUTH AND FAMILY  
SERVICES

### Trail Facts:

- ◇ The **blue** trail enters the preserve from A.P. Gates Road near the intersection of Woodmont Circle. It was created to provide residents in the area easy access to the preserve and create shorter loop hikes.
- ◇ It quickly takes you over a bog bridge across a vernal pool to the intersection with the red trail.
- ◇ If you continue on you cross a small intermittent stream and continue thru mixed hardwood forest with mountain laurel and many beech trees.
- ◇ At the "T" junction with the red trail you can go either left or right, creating a hike of about a mile to the left or a .7 mile hike to the right.
- ◇ The **red** trail starts at Tater Hill Road about 500' past A.P. Gates Road and the cemetery. A finger of it crosses an intermittent stream, then heads up a short climb and into a small hollow before it forms a loop.
- ◇ Going right you'll hike through old pasture land which is now mixed hardwood forest.
- ◇ After passing the junction with the blue trail you'll enter an area of deep ferns. Watch for old stone fences which show the old agrarian past and now also mark the preserve's boundary.
- ◇ The trail winds thru wetlands, intersects the blue trail, crosses a small intermittent stream and meanders back through mixed hardwoods to where it split.

### Permitted Activities:

- ◆ Hiking
- ◆ Nature study
- ◆ Snowshoeing
- ◆ Mountain biking
- ◆ Horseback riding
- ◆ Birding
- ◆ Cross-country skiing

No motorized vehicles allowed on the property.

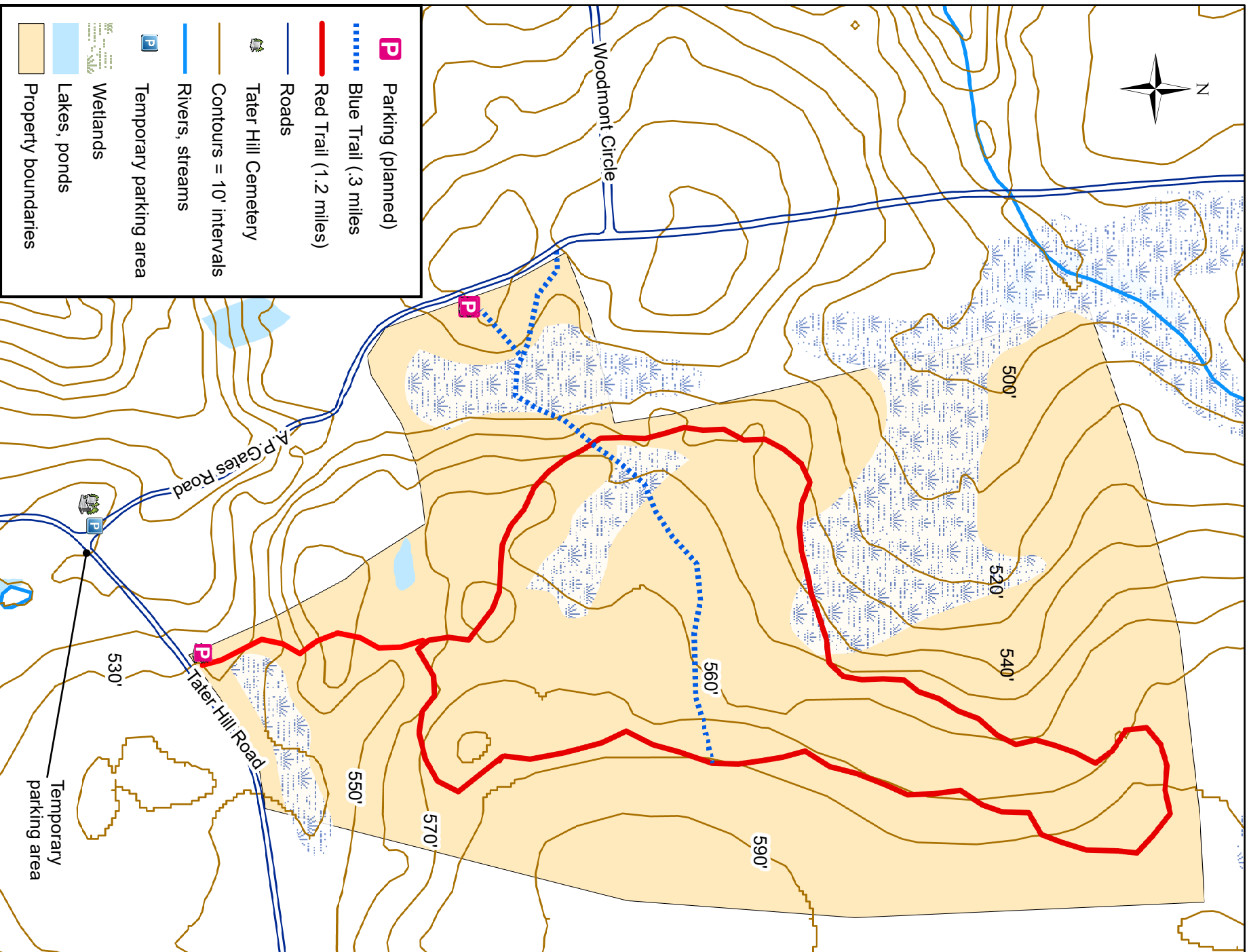
## EAST HADDAM TRAILS

### MILLER FARM PRESERVE

The 87-acre Miller Farm Preserve was purchased by East Haddam Land Trust in 2018. Back in the 40's and 50's, Charles and Margaret Miller raised a family as subsistence farmers. When Margaret's daughter, Peggy, inherited the land, she knew she wanted to preserve it in perpetuity. This parcel protects the Roaring Brook and Eightmile River Watersheds and is located in Audubon Connecticut's Lyme Forest Block Important Bird Area. Its trees and shrubs, including masses of winterberry, shelter and feed woodland birds. Salamanders, frogs and toads-amphibians particularly sensitive to habitat loss-live in its ferns, moss and wildflower dotted wetlands.



# MILLER FARM PRESERVE



For general information only

Managed by **EAST HADDAM LAND TRUST**