

BLOCH PRESERVE AND MONICA'S WOODS

Directions:

- * From Route 82 / Town Street, south of Moodus Center:
 - * At the flashing light by the Congregational Church, turn east onto East Haddam-Colchester Turnpike, and proceed 1.63 miles.
 - * Turn left onto Southwinds Road.
 - * Access to BOTH Bloch Preserve and Monica's Woods is from the Bloch Preserve entrance, .2 miles up Southwinds Road on the right. Look for the brown Bloch Preserve sign.
- IMPORTANT:** Parking is along the roadside. Please be considerate of neighbors in choosing where to park.

Trail Facts:

- The terrain within Bloch Preserve is reasonably flat. The terrain within Monica's Woods is steep throughout.
- The .5 mile red trail leads north through Bloch Preserve, turns west and crosses into Monica's Woods. Difficulty: Easy
- The .8 mile blue loop trail lies entirely within Monica's Woods, and runs along the side of a steep hill. Difficulty: Moderate.
- An orange trail is planned for the south end of Monica's Woods, but is currently incomplete.

Permitted Activities:

- ◆ Hiking
- ◆ Nature study
- ◆ Snowshoeing
- ◆ Birding
- ◆ Painting
- ◆ Photography

EAST HADDAM TRAILS

BLOCH PRESERVE

AND

MONICA'S WOODS

The 13.1 acre Bloch Preserve consists of two parcels, purchased in 2015 and 2018, respectively, from Philip J. Bloch and Anthony Bloch, and Philip J. Bloch and Deborah A. Bloch. Mountain laurel is abundant in the understory of the preserve's mature forest of oak and hickory.

Monica's Woods encompasses 44.2 acres, comprising three lots, a 23.23-acre lot acquired in 2018 from Ira M. Sakolsky, and lots of 12.56 and 8.41 acres respectively, acquired in 2018 from Marti Smith and Thomas P. Smith, Jr. The wooded terrain is steep and forested.

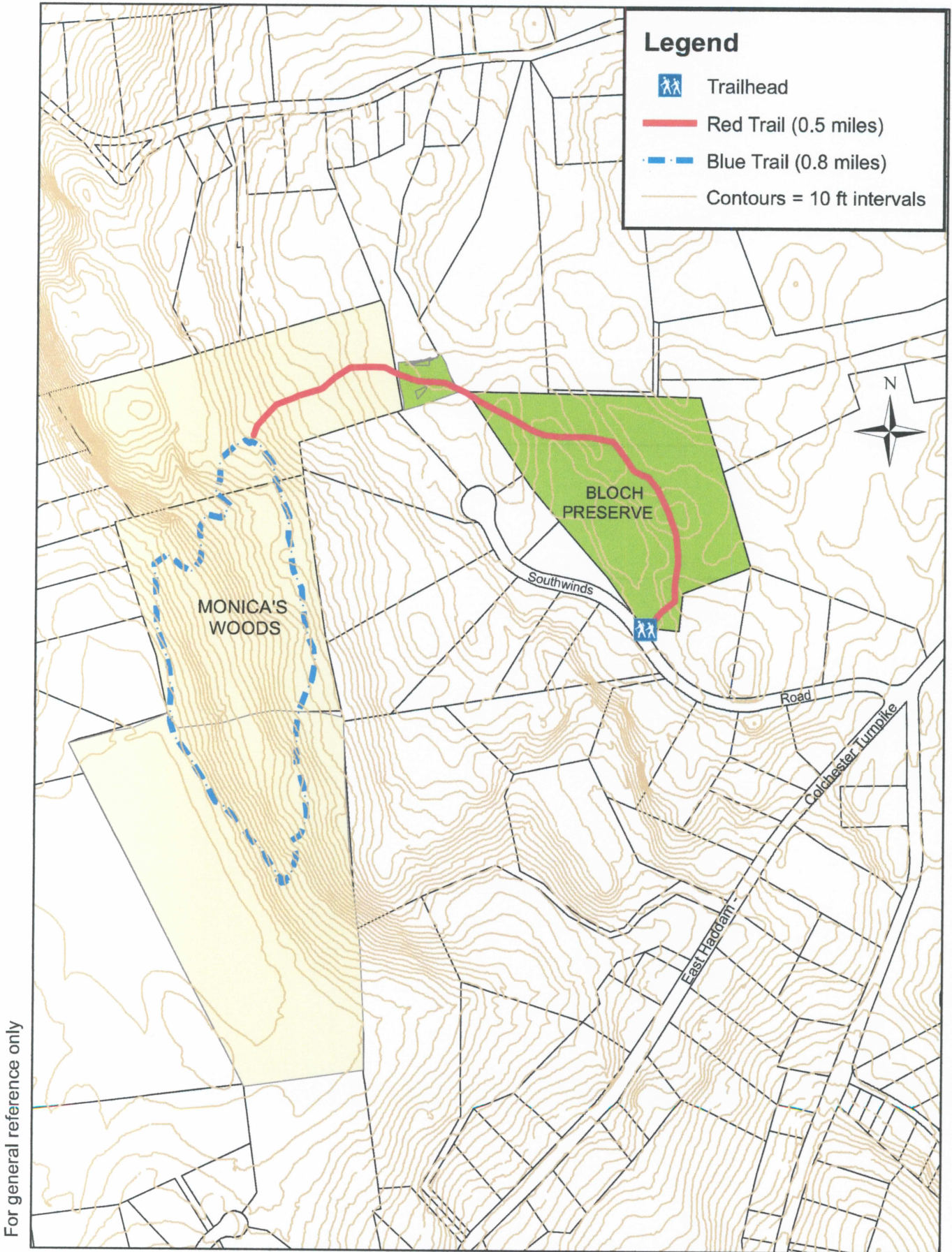
For more information or to report any problems during your visit, see:
www.ehlt.org



EAST HADDAM
YOUTH AND FAMILY
SERVICES



BLOCH PRESERVE AND MONICA'S WOODS



For general reference only

Managed by EAST HADDAM LAND TRUST

0 190 380 760 Feet